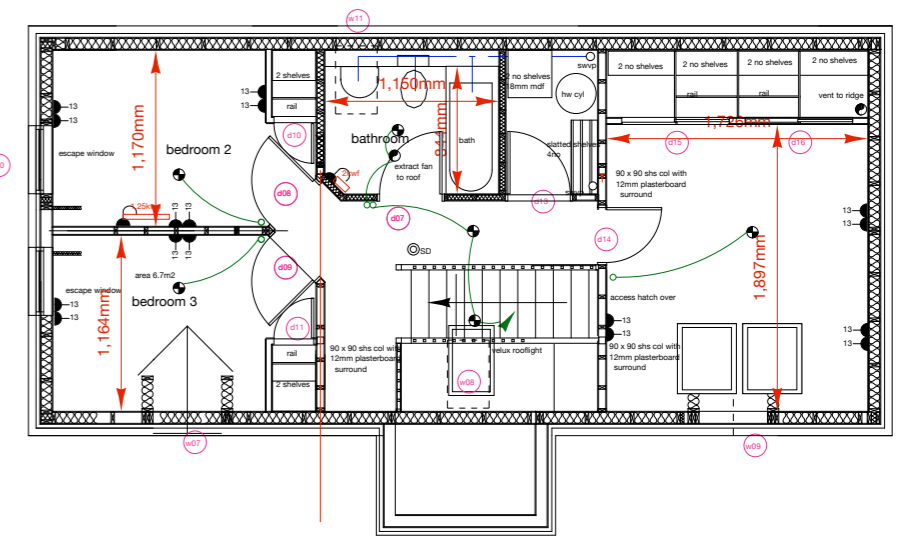


House no 5
4apt 5 person

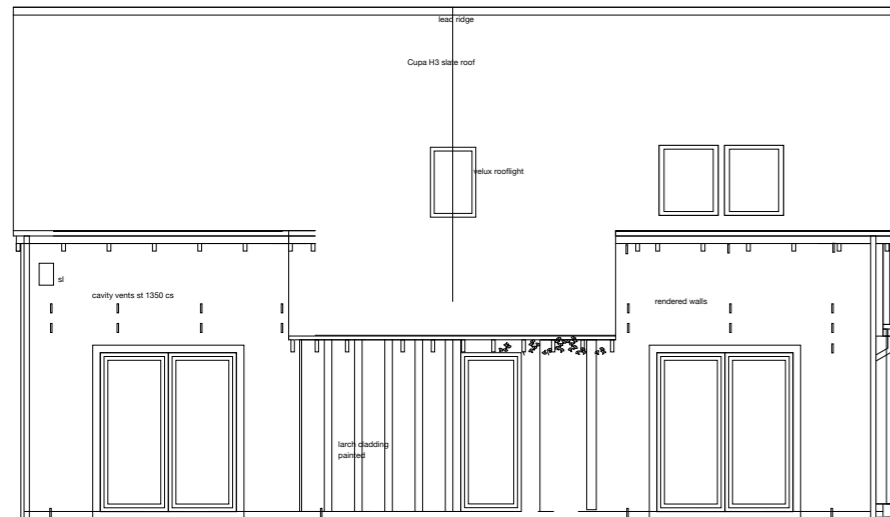
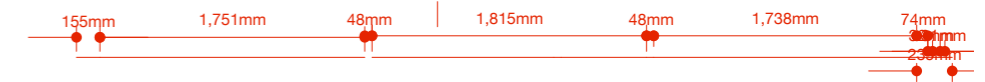
GROUND FLOOR PLAN
ground floor area 54.25m²
total floor area 97m²

House no 6
3 apt 3 person

GROUND FLOOR PLAN
area 65.5 m²



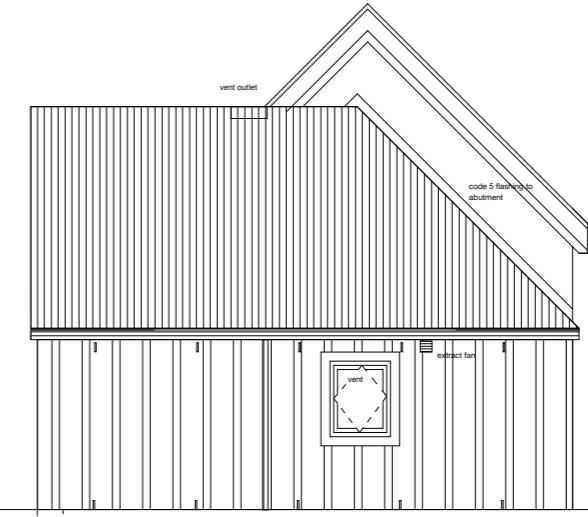
UPPER FLOOR PLAN
HOUSE NO 5



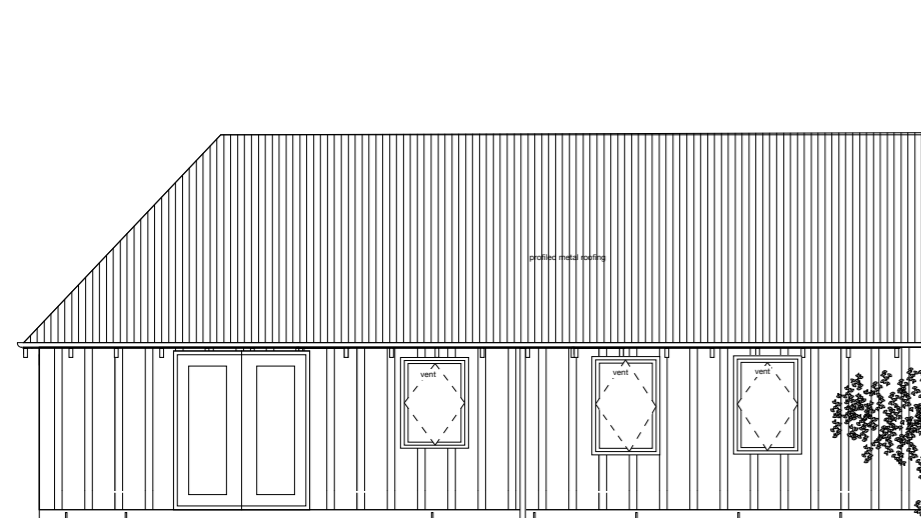
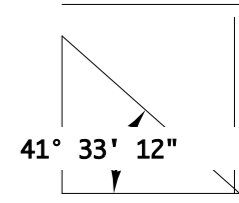
SOUTH ELEVATION
HOUSE no 5



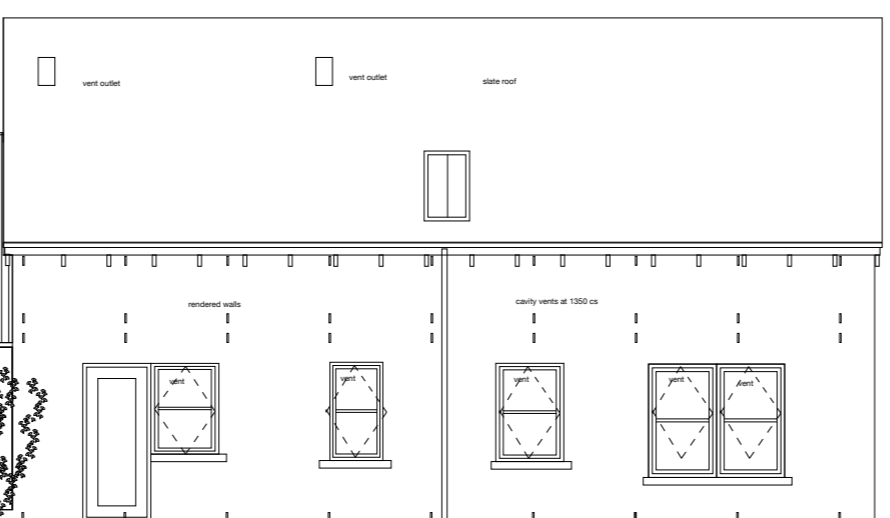
SOUTH ELEVATION
HOUSE NO 6



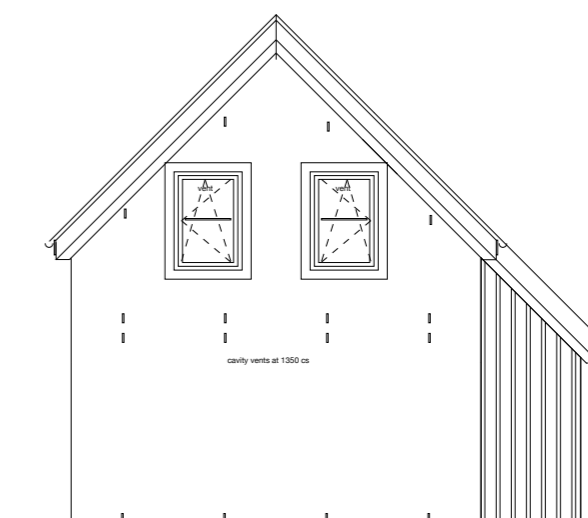
EAST ELEVATION
HOUSE NO 6



NORTH ELEVATION
HOUSE NO 6



NORTH ELEVATION
HOUSE NO 5



WEST ELEVATION
HOUSE NO 5

- ELECTRICS
- light pendant
 - wall mounted light
 - spotlight
 - 13amp socket outlet
 - 5amp socket outlet
 - switched fused spur
 - telephone point
 - satellite tv outlet with conduit to dish position
 - tv
 - analogue tv outlet with conduit to aerial position
 - SD Aico optical smoke detector hard wired
 - extract fan

Project: Newhall Primary School
 Drawing Title: 3 person House
 5 Person House
 Drawing No: 05
 Scale: 1/100
 Date: June 2007
 David Somerville Architect
 B.Arch, A.R.I.A.S., R.I.B.A.
 Balchraggan Abriachan, Inverness IV3 8LB
 Telephone 01463 861442
 Fax 01463 861385